

Mansfield State School

Instrumental Music Program

Policy Document

# Contents

3.....Introduction and Documents  
4.....Purposes, Principles and Priorities  
5.....Instruments and Teachers  
6..... General Information  
8..... Care and Instrument Maintenance  
10.....Selection Criteria  
11.....Music Lesson Timetables  
12.....Private Tuition  
12.....Assessment and Reporting  
12.....Student Requirements  
13.....Insurance  
14.....Music Parent Support Group



# Introduction

*“All children can derive considerable fulfilment and enjoyment from music education, not only those who show a particular talent. The skills, concepts and attitudes that children acquire as a result of their music education should be those that benefit them not only during their schooling, but also in the years beyond. Music programs that provide opportunities for children to be actively involved in a wide range of musical experiences are more likely to develop in them an understanding of and sensitivity towards music, giving them a better chance to find meaning in music and become aware of the value of music in their own lives, as well as the lives of others”.*

(Designing an Instrumental Music Program- Curriculum guide p3)

## Relevant Department of Education and Training Documents dealing with the Instrumental Music Program

The appropriate policies and guidelines for Instrumental Music in Queensland State Schools are listed below.

Instrumental Music Program – Principles and Policy statement

<https://education.qld.gov.au/curriculum/school-curriculum/instrumental-music-program/instrumental-music-program-policyInstrumental>

Music Curriculum 2.1

<https://education.qld.gov.au/curriculums/Documents/instrumental-music-curriculum.pdf>

## Purposes, Principles and Priorities of the Instrumental Music Program

1. To provide students with the opportunity to experience the expressive qualities of music through learning to play a band or orchestral instrument.
2. To provide for students the opportunity for musical development through instrumental instruction on a group basis.
3. To provide these students with the opportunity of being part of a school Concert Band or String Orchestra so that they can develop ensemble performance skills as an integral part of their music education. ***Cooperative music making, which is being part of a larger music making group, is the aim of the Instrumental Music Program.***
4. To benefit the school as a whole by having ensemble groups that can perform for the school community as well as outside in the wider community and thus enabling the students to share with their audiences the enjoyment of making music.
5. To provide those children selected for the program, the opportunity for enrichment experiences as part of a sound general education.
6. To provide a valuable and desirable extension to the school classroom music program.
7. To engender the feeling in the community that the Instrumental Music Program is very worthwhile and needs to be strongly supported financially and in other ways by the school community.
8. To demonstrate that Instrumental Music tuition makes a significant contribution not only to the students' music education, but also to their personal, social and emotional development.

## Musical Instruments offered at Mansfield State School

String Instruments	Violin, Viola, Cello, Double Bass
Brass Instruments	Trumpet, French Horn, Trombone, Baritone, Euphonium, Tuba and Electric Bass Guitar
Woodwind Instruments	Flute, Clarinet, Bass Clarinet, Alto Saxophone and Tenor Saxophone
Percussion Instruments	Snare Drum, Bass Drum, Glockenspiel, Xylophone, Drum Kit, Bongo Drums, Timpani, Maracas etc.

## Instrumental Music Teachers

Instrumental Music teachers are committed to providing instruction in four areas: These areas and the names of the Instrumental Music teachers for 2023 are:

String	Mrs Lisa Stevenson
Brass	Mrs Angela Santamaria
Woodwind	Mrs Kristine Dutt
Percussion	Mr Steve Stiller

All Instrumental teachers, and the Deputy Principal, are members of the Instrumental Music Committee for selection of students

## Instrumental Music General Information

1.	Children who are presently in Years 2 can only join the String Program the following year.
2.	Children who are presently in Years 3, 4 and 5 can join Brass, Woodwind, Percussion or the String program the following year.
3.	Lessons are provided free of charge. However, parents must agree to certain requirements as outlined below if they would like their child to be involved in the program.
4.	Children are NOT permitted to learn one instrument for a year and then change to a different instrument in the following year. Through careful professional assessment and discussion with children and parents, it is hoped that a child will continue to learn ONE instrument throughout their years at Mansfield SS until they complete year 6. Parents/Children CANNOT DEMAND to learn a particular instrument. The school endeavours to give children the opportunity to learn an instrument that they prefer but this depends on their suitability for the instrument and the places available for the year. Also it must be clearly understood that the whole reason for instituting the Instrumental Music Program in schools by the Education Department is for group music making (ensembles). This necessitates a balance of all types of instruments, not just numerous flute or violin players.
5.	When children join the Instrumental Music Program they are required to stay with the program until they leave Mansfield State School. Alternatively, the child may be asked to leave the program if progress, attitude and responsibilities of both the child and parents have not been fulfilled.
6.	Children receive instruction for one ½-hour lesson per week in groups ranging from 4-10, but averaging about 6-7 students. Lessons are conducted by visiting instrumental music teachers during regular school lesson time.
7.	Lessons are provided free of charge and the school has a limited number of instruments that the children can use. However, school flutes, clarinets, trumpets, trombones, violas and violins can only be used for 12 months and then children must have their own instrument if they wish to continue. Larger school instruments can be used by children throughout their primary school years, however cellos can only be used by the one student for a maximum of three (3) years. Please note that the school does not supply Electric Bass Guitars; these must be supplied by the family.

8.	<p>Although lessons are free of charge, children using a school instrument will be required to pay a maintenance fee for 12 months. All other children will have to pay a contribution fee to help with the purchasing of music and other requirements needed for the successful maintenance of the Instrumental Music Program. Beginning students are required to pay an additional cost to cover the cost of their Mansfield SS music folder, which they use for the duration of the program. Folders are available from the music teachers once the office has received payment.</p>
9.	<p>All Mansfield SS Instrumental Music members wear a performance uniform which has been developed and endorsed by the Music Support Group and the P&amp;C Association. All students are required to wear this uniform at performances and the music shirt is available for purchase at the uniform shop. However, black shoes and black socks need to be sourced by parents. Long hair is required to be in a ponytail or pinned back. A maroon ribbon is also to be worn in hair. Maroon ribbons may be purchased from the uniform shop as well.</p>
10.	<p>Students in the instrumental Music program will have 2 contacts with an instrumental music teacher each week. Once is in a small group lesson, and the other in an ensemble such as a String Orchestra or Concert Band. Therefore, children who join the Instrumental Music Program are <u>REQUIRED</u> to attend rehearsal each week. Instrumental Music Teachers will notify parents of rehearsal times at the beginning of the year.</p> <p style="text-align: center;">Senior String Orchestra Rehearsal  Junior String Orchestra Rehearsal  Beginner String Ensemble (rehearsing 2/3 weeks prior to concert)  Junior Concert Band  Senior Concert Band  Percussion Ensemble</p>
11.	<p>Homework/Practice commitments - Students are expected to practise their instrument at least 5 times each week. The amount of practice will vary depending on the length of time they have been playing their instrument. Beginners will only require a shorter amount of time (e.g. 5-10mins) but this should build up to a longer practice after several years. (e.g. 30mins or more by year 6). A usual practice session should include a warm-up or scales, followed by set work from the previous lesson at school. Students should also practise music that they are working on in rehearsal for Band or Orchestra. Consistent regular practice is much more beneficial than one long practice the night before a lesson. Instrumental Music Teachers will advise students of the exact amount of practice time required.</p>

IT WILL BE A SCHOOL DECISION, AFTER CONSIDERATION OF ALL SELECTION CRITERIA, WHETHER A STUDENT IS ELIGIBLE FOR THE MANSFIELD SS INSTRUMENTAL MUSIC PROGRAM. THIS DECISION IS MADE IN CONSULTATION WITH THE INSTRUMENTAL MUSIC TEACHERS AND THE DEPUTY PRINCIPAL AS PART OF THE INSTRUMENTAL MUSIC COMMITTEE.

## Care and Maintenance of Musical Instruments

Instrumental Music Teachers regularly inspect school instruments to check that they are being cared for and to find out if any maintenance and/or repairs are needed. If repairs are needed, the parent will be asked to take the instrument to a local repairer and the school will then pay for the repairs. ***We need to emphasize here that only general wear and tear is covered by the school! Damage caused by mistreatment or neglect is not covered and parents will be invoiced for costs of this nature.***

An Order Form from the school Business Services Manager (BSM) must be obtained before taking the instrument to the repairer.

Although lessons are free of charge, children using a school instrument will be required to pay a **\$125 maintenance fee** for 12 months.

All other children will have to pay a **\$80 contribution fee** to help with the purchasing of music and other requirements needed for the successful maintenance of the Instrumental Music Program.

Beginning students are required to pay **an additional \$15** to cover the cost of their Mansfield SS music folder. Money should be paid to the office. Folders will then be issued by music staff.

Once accepted into the Instrumental Music Program, instruments may be borrowed over the Christmas holiday periods so that the children can practice, provided the child is not leaving the school. A Loan Agreement form will need to be completed and signed by parents prior to the holiday period. A Loan Agreement form must also be signed by parents before an instrument is issued to a student. The form must be fully completed and returned to the Business Services Manager (BSM) at the Administration.



## Selection Criteria

**DUE TO THE LIMITED AMOUNT OF TIME FOR INSTRUMENTAL MUSIC CLASSES, STUDENTS WILL BE ASSESSED AND SELECTED ACCORDING TO THE FOLLOWING CRITERIA:**

1. Children must have a **love of music.**
2. Children need to demonstrate a **very high or high level of achievement in rhythmic responses and in the understanding of written notation.** A **very high or high level of ability to sing in tune and recognise pitch differences** is also of immense help in learning to play an instrument. These results are collected through classroom music assessments, music aptitude testing and reports.
3. Due to the fact that lessons for the program are held during class time and children will miss some class lesson time, children need to demonstrate to the classroom teacher that their **general academic achievement is mainly of a very high or high standard.** Some students whose academic achievement is of a satisfactory level may be considered for the program- depending on the places available. Children will receive a half hour instrumental lesson once per week in groups ranging from three to ten students approximately. They also will attend an appropriate ensemble rehearsal for their level.
4. An important criterion for selection for the program is **behaviour.** Children must **consistently demonstrate high or very high levels of behaviour,** that is they must be polite, show an ability to listen well and work as a team member of the band or orchestra. **Students must also show that they are reliable and possess a strong work ethic.**

## Selection Criteria- String Instruments

1. The main selection criteria for string instruments will be the student's size and height. (For example, a small child cannot successfully play a Double Bass so a violin may have to be offered instead). Hand strength is also a consideration for the lower/bigger instruments. A student's preference will be taken into consideration as much as possible.

## Selection Criteria – Brass Instruments

1. Students are required to practise producing sound, using their lips, on various brass mouthpieces. Students' lips either suit high pitched Brass Instruments (Trumpet, French Horn) or low pitched Brass Instruments (Trombone; Baritone; Euphonium or Tuba).
2. Students are selected on their ability to produce sound using a particular Brass mouthpiece.
3. Certain physical elements must also be considered along with previous music experiences (eg Horn students)

## Selection Criteria – Woodwind Instruments

1. As well as the Criteria listed above, each woodwind instrument has specific requirements for students to have the best chance of success.
2. FLUTE - Students need to be able to reach all of the keys.  
- Certain mouth shapes work more effectively than others.
3. CLARINET - Students need to be able to cover all of the tone holes.  
- Jaw alignment can affect playing ability.
4. ALTO SAX - Jaw alignment can affect playing ability.
5. TENOR SAX / BASS CLARINET - Taller students generally would be chosen for these instruments. As with other reed instruments, jaw alignment can affect playing ability.

## Selection Criteria – Percussion Instruments

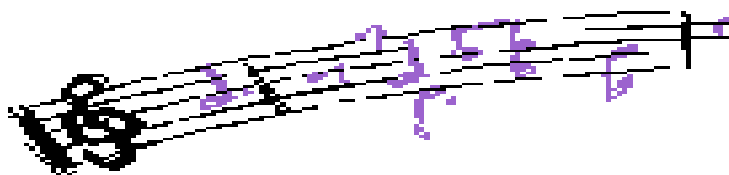
1.	Students must be physically well coordinated and need to perform a set of rhythmic exercises, to a very high level, using hands and feet to test for physical coordination.
2.	Students must achieve a very high level in the reading of music and rhythmical patterns.

## Timetables for Instrumental Lessons

The Deputy Principal and Instrumental Music teachers consult on the most suitable groupings of students.

With reference to the School General Timetable, times for lessons are decided so as not to clash with other specialist lessons.

Copies of Instrumental Lesson Timetables are distributed to the Principal, Deputy Principals, BSM; Administrative Officers and Teaching Staff.



## Children Who Receive Private Tuition

Children who are learning an instrument privately can join the School Concert Band or String Orchestra after consultation with the Deputy Principal and Instrumental Music Teachers. This will be decided on a case by case situation. Students new to the school will be assessed by the relevant Instrumental music teacher. They will be offered a place in the ensemble if a place is available and if they meet the selection criteria. **A fee of \$60** will apply in 2023 to allow for purchase of resources such as music and photocopying.

They must accept the obligation that they will be a member of the band or orchestra and participate in all rehearsals and concerts.

Children who are learning to play an instrument at school and then, after a period of time, supplement these school lessons with private tuition can still be part of the program. School owned instruments can be used in these circumstances.

## Assessment and Reporting

Children will receive Instrumental Music Reports as part of their school report cards at the end of each Semester.

If a child has not made adequate progress by the end of the year, then after consultation with the Instrumental Music teacher, the Coordinator and the Principal, parents will be notified that the child is no longer eligible for the program.

If a child is not keeping up with adequate practice at home during the year, parents will be notified by letter of the child's commitment to practise his/her instrument at home regularly if they wish to remain in the Instrumental Music Program.

## Student Instrumental Requirements

Students will be notified of the materials they will need to take part in the Instrumental Music Program at the beginning of the New Year.

Each student will receive a letter from their specific Instrumental Music teacher.

# Instrument Insurance

School instruments are not covered for any incidences whatsoever through the school's insurance policy.

Instruments are not covered by the school's insurance for:

- Transit to/from home and school (e.g. left on bus)
- Accidental damage (e.g. dropped, broken)
- Unaccounted/unexplained loss;
- Theft, fire or vandalism in home/outside school

**Parents are strongly advised to include instruments on household contents insurance to ensure full insurance coverage.**



## Music Parent Support Group (MSG)

A Music Parent Support Group for Instrumental Music was formed in 2008 to assist with organisation of annual performance calendar and events. A few weeks prior to events a meeting will be organised and parents notified of details.

Parents of students who have an interest in our music program are encouraged to join this group - please email

[music@mansfieldss.eq.edu.au](mailto:music@mansfieldss.eq.edu.au)

**There is also a Facebook page used specifically to contact instrumental music families as things arise. Please search –**

**‘Mansfield State School Arts Department’**

Alternatively, you can click the link:

<https://www.facebook.com/MansfieldStateSchoolArtsDepartment/>



**Mansfield State School Arts Department**

34 likes • 91 followers